

Two-phase sampling

Thomas Lumley

26 July 2019

Two-phase sampling

Take a sample (or pretend that your cohort is a sample), then based on the data you have, take a subsample

Technically, even traditional case-control designs are two-phase sampling, but they are special because the analysis is based on a likelihood.

Here we cover

- case-control sampling depending on covariates as well as outcome
- stratified and unstratified case-cohort sampling
- other designs

These are analysed based on survey methodology, using sampling weights.

Full analysis

Two phases of sampling: - specify clusters, strata and sampling probabilities at each phase

Simplified because

- often no clusters
- often no strata at Phase I
- sampling probabilities at Phase I are often equal
- sampling probabilities at Phase II can be computed by the program

In R

`twophase()` function declares a two-phase design

- `id`: list of two `id` formulas (usually `list(~1, ~1)`)
- `strata`: list of two `strata` formulas (first one is usually `NULL`)
- `subset`: logical vector indicating whether an observation is in Phase II
- `data`: data frame with Phase I and Phase II data
- `method`: "`simple`" when there is no clustering or Phase-I strata

Approximate analysis

If phase I variables only used for stratifying Phase II sampling, and population is large or infinite a good **approximate** analysis is

- ignore phase I
- treat phase II as sampled from population

For case-control the approximation is **exact**

The approximation is useful when using software other than R

For case-cohort, the approximation is called “Barlow’s method”

Case-cohort design

If X is an expensive predictor variable in a large cohort study with a low event rate, then

- initially measure X on, eg, 10% of cohort (subcohort)
- follow up and measure X on all cases

Would expect nearly full efficiency because information is mostly in cases.

Can use the same subcohort for different case groups, or after more cases accumulate, save more money

For **very large** cohorts (eg national health data) use case-cohort sampling to save computer time.

Practical problems

X may be measured at different times for different people (even if on stored samples taken at the same time)

For biochemical measurements, laboratory drift may be a problem, and will be confounded with case/subcohort status

In contrast, for matched case-control sampling you would always measure X on case and matched controls at the same time.

Problem doesn't arise when entire measurement is retrospective and the order of lab processing can be randomised.

Efficiency

If there is only one event variable, case-cohort sampling is less efficient than matched case-control sampling (Langholz & Thomas, Biometrics 1991)

If there are multiple event variables case-cohort sampling is typically more efficient because the subcohort and the cases of the first event can be reused as controls for the second event.

Analysis

Analysis has always been by weighted Cox regression, initially with complicated time-dependent weighting schemes

- Prentice, Self & Prentice

The complications were to make the weights **predictable**, ie, depending on the past and not the future. Necessary for 1990s mathematical theory using martingales.

Modern analysis uses retrospective sampling from the full cohort data set: weights can depend on any phase I data.

- $\pi_i = 1$ for cases (whether or not part of subcohort)
- π_i for non-cases in subcohort is proportion of non-cases that are in subcohort

Modern approach is easier, (slightly) more efficient, allows for clustering, **allows for calibration**

Example

Cohort of 10,000 people, subcohort of 500

203 cases occur, 12 in subcohort members.

Sampling probability is $\pi_i = 1$ for all 203 cases

Sampling probability is $\pi_i = \frac{500-12}{10000-203}$ for non-cases

Stratified case-cohort design

A small subcohort may have very few people with a rare exposure

Makes sense to oversample groups of people who

- do have a rare value of a phase I exposure/confounder Z
- are likely to have a rare value of the phase II variable X

In traditional analysis, the stratifying variable had to be available at baseline (predictable)

In modern survey analysis, the stratifying variable can be measured at any time: π_i can depend on arbitrary Phase I data.

Design examples

- Low potassium is more common in people taking thiazide drugs for blood pressure, so oversample people with high blood pressure
- If medication data is available at Phase I, oversample people taking thiazides.
- in study of genetics and heart attack, oversample people at high predicted risk of heart attack (Framingham risk score)

Worked example: Wilms' Tumour study

- Wilms' Tumour is a rare kidney cancer in children
- Most US children with the cancer are in the National Wilms' Tumour Study Group clinical trials
- We have data for everyone, but we can simulate two-phase sampling strategies such as case-cohort

Simple case-cohort

```
library(survival)
data(nwtco)
dcchs<-twophase(id=list(~seqno,~seqno), strata=list(NULL,~rel),
               subset=~I(in.subcohort | rel), data=nwtco)
dcchs

## Two-phase sparse-matrix design:
## twophase2(id = id, strata = strata, probs = probs, fpc = fpc,
##          subset = subset, data = data)
## Phase 1:
## Independent Sampling design (with replacement)
## svydesign(ids = ~seqno)
## Phase 2:
## Stratified Independent Sampling design
## svydesign(ids = ~seqno, strata = ~rel, fpc = `*phase1*`)
```

Cox model

```
model <- svycoxph(Surv(edrel,rel)~factor(stage)+factor(histol)+I(age/12),
                 design=dcchs)
```

```
model
```

```
## Call:
```

```
## svycoxph(formula = Surv(edrel, rel) ~ factor(stage) + factor(histol) +
##          I(age/12), design = dcchs)
```

```
##
```

	coef	exp(coef)	se(coef)	z	p
## factor(stage)2	0.69	2.00	0.16	4	2e-05
## factor(stage)3	0.63	1.87	0.17	4	2e-04
## factor(stage)4	1.30	3.67	0.19	7	6e-12
## factor(histol)2	1.46	4.30	0.15	10	<2e-16
## I(age/12)	0.05	1.05	0.02	2	0.05

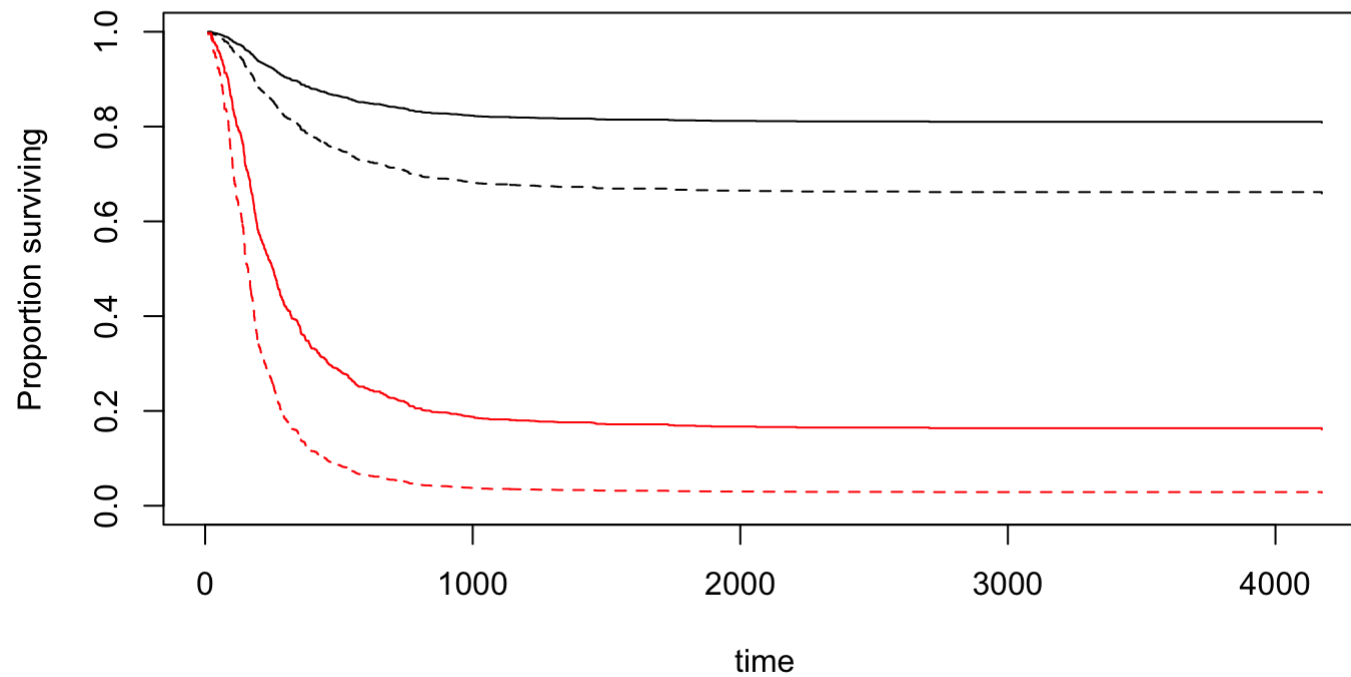
```
##
```

```
## Likelihood ratio test= on 5 df, p=
```

```
## n= 1154, number of events= 571
```



```
s<-predict(model, type="curve",newdata=  
  data.frame(stage=c(1,1,4,4),histol=c(1,2,1,2),age=c(12,12,12,12)))  
plot(s[[1]]); lines(s[[2]],lty=2)  
lines(s[[3]],col="red"); lines(s[[4]],lty=2,col="red")
```



Two-phase case-control designs

Ordinary case-control study samples on Y only.

Sample on other Phase I variables Z as well:

- surrogates for exposure
- interaction variables

Survey analysis is easy: $\pi_i(Z, Y)$ are just the sampling probabilities

Semiparametric maximum likelihood analysis is possible, can be more accurate, makes more assumptions

Examples

Gene:environment interaction, with genetic data measured at phase II -
sample balanced numbers of cases and controls with and without
environmental exposure

Surrogate for exposure: eg self-report vs examination of medical records -
sample so that you expect to get equal numbers exposed and unexposed

Worked example: Wilms' Tumour study

- Wilms' Tumour is a rare kidney cancer in children
- Most US children with the cancer are in the National Wilms' Tumour Study Group clinical trials
- One important predictor of survival is **histology** (bad/good)
 - the study group central pathologist is much better at measuring histology
 - could use local hospital measurements as a surrogate
- We have central-lab and local-hospital measurements for everyone, but we can simulate two-phase sampling strategies

Wilms' Tumour: Sampling strategies

Bad histology is rare (about 10%). Relapse is rare (14%)

- **random:** random sample of 1200
- **case-control:** obtain central-lab histology on all cases, random subset of controls
- **risk-based:** obtain central-lab histology on all with bad histology according to local lab, random subset of others
- **balanced:** all cases, all bad histology, subsample of remainder

[exercise: **balanced+stage:** same, but stratified on disease stage (I-IV) as well]

Random

```
data(nwtco, package="survival")
random <- nwtco[sample(nrow(nwtco), 1200), ]
coef(summary(glm(rel~factor(histol)*factor(stage), data=random,
                  family=binomial)))
```

##	Estimate	Std. Error	z value	Pr(> z)
## (Intercept)	-2.9741	0.2237	-13.2944	2.495e-40
## factor(histol)2	1.4700	0.4504	3.2640	1.098e-03
## factor(stage)2	1.0604	0.2862	3.7049	2.115e-04
## factor(stage)3	1.0381	0.2992	3.4698	5.209e-04
## factor(stage)4	1.4055	0.3324	4.2287	2.350e-05
## factor(histol)2:factor(stage)2	0.4949	0.5808	0.8522	3.941e-01
## factor(histol)2:factor(stage)3	1.0050	0.5961	1.6859	9.182e-02
## factor(histol)2:factor(stage)4	1.2618	0.7251	1.7402	8.183e-02

Case-control

```
cases <- subset(nwtco, rel==1)
controls <- subset(nwtco,rel==0)[sample(3457, 629),]
casecontrol <- rbind(cases,controls)
coef(summary(glm(rel~factor(histol)*factor(stage),data=casecontrol,
                 family=binomial)))
```

##	Estimate	Std. Error	z value	Pr(> z)
## (Intercept)	-0.97127	0.1224	-7.93443	2.115e-15
## factor(histol)2	1.41756	0.3428	4.13572	3.539e-05
## factor(stage)2	0.66899	0.1720	3.88848	1.009e-04
## factor(stage)3	0.80198	0.1814	4.42212	9.774e-06
## factor(stage)4	1.12542	0.2222	5.06473	4.090e-07
## factor(histol)2:factor(stage)2	-0.03772	0.4646	-0.08118	9.353e-01
## factor(histol)2:factor(stage)3	0.38934	0.4698	0.82875	4.072e-01
## factor(histol)2:factor(stage)4	1.24170	0.7108	1.74697	8.064e-02

Balanced, ignoring two-phase structure

```
full <- subset(nwtco, (rel==1) | (instit==2))
sampled <- subset(nwtco, (rel==0) & (instit==1))[sample(3207, 379),]
balanced <- rbind(full, sampled)
coef(summary(glm(rel~factor(histol)*factor(stage), data=balanced,
                 family=binomial)))
```

##	Estimate	Std. Error	z value	Pr(> z)
## (Intercept)	-0.6430	0.1288	-4.9931	5.943e-07
## factor(histol)2	-0.3576	0.2670	-1.3394	1.804e-01
## factor(stage)2	0.7493	0.1853	4.0439	5.258e-05
## factor(stage)3	0.7891	0.1937	4.0733	4.635e-05
## factor(stage)4	0.6272	0.2193	2.8605	4.229e-03
## factor(histol)2:factor(stage)2	0.1697	0.3604	0.4707	6.379e-01
## factor(histol)2:factor(stage)3	0.3773	0.3500	1.0780	2.810e-01
## factor(histol)2:factor(stage)4	1.6463	0.4407	3.7358	1.871e-04

Balanced with weights

```
balanced$wt <- with(balanced, ifelse(rel==1 | instit==2, 1, 3207/379))
bdesign <- svydesign(id=~1, strata=~interaction(rel,instit),
                  weights=~wt,data=balanced)
coef(summary(svyglm(rel~factor(histol)*factor(stage),design=bdesign,
                  family=quasibinomial)))
```

##	Estimate	Std. Error	t value	Pr(> t)
## (Intercept)	-2.7000	0.1099	-24.5634	4.308e-108
## factor(histol)2	1.3354	0.2961	4.5101	7.122e-06
## factor(stage)2	0.7657	0.1888	4.0560	5.317e-05
## factor(stage)3	0.9069	0.2003	4.5278	6.560e-06
## factor(stage)4	0.9298	0.2337	3.9792	7.333e-05
## factor(histol)2:factor(stage)2	0.2605	0.4222	0.6170	5.374e-01
## factor(histol)2:factor(stage)3	0.2251	0.4154	0.5419	5.880e-01
## factor(histol)2:factor(stage)4	1.2805	0.5793	2.2104	2.727e-02

Balanced: proper two-phase

```
balanced2 <- merge(balanced[,c("seqno", "histol")], nwtco[, -3],
                  by="seqno", all=TRUE)
balanced2$insample <- !is.na(balanced2$histol)
summary(balanced2[, 1:4])
```

```
##          seqno          histol          instit          stage
## Min.      : 1   Min.      :1.0   Min.      :1.0   Min.      :1.00
## 1st Qu.:1009   1st Qu.:1.0   1st Qu.:1.0   1st Qu.:1.00
## Median :2022   Median :1.0   Median :1.0   Median :2.00
## Mean    :2026   Mean    :1.3   Mean    :1.1   Mean    :2.07
## 3rd Qu.:3039   3rd Qu.:2.0   3rd Qu.:1.0   3rd Qu.:3.00
## Max.    :4088   Max.    :2.0   Max.    :2.0   Max.    :4.00
##                                     NA's    :2828
```

```
b2design <- twophase(id=list(~1,~1),
                    strata=list(NULL,~interaction(rel,instit)),
                    subset=~insample,data=balanced2, method="simple")
coef(summary(svyglm(rel~factor(histol)*factor(stage),design=b2design,
                    family=quasibinomial)))
```

##	Estimate	Std. Error	t value	Pr(> t)
## (Intercept)	-2.7000	0.1214	-22.2489	5.791e-92
## factor(histol)2	1.3354	0.3045	4.3855	1.259e-05
## factor(stage)2	0.7657	0.1887	4.0587	5.257e-05
## factor(stage)3	0.9069	0.2002	4.5305	6.479e-06
## factor(stage)4	0.9298	0.2336	3.9809	7.281e-05
## factor(histol)2:factor(stage)2	0.2605	0.4217	0.6176	5.370e-01
## factor(histol)2:factor(stage)3	0.2251	0.4151	0.5422	5.878e-01
## factor(histol)2:factor(stage)4	1.2805	0.5790	2.2115	2.719e-02

[Very little impact of proper two-phase analysis]

Related designs

CHARGE-S DNA resequencing study to follow up results from GWAS in 10 phenotypes

- Random subcohort + people with extreme values on the 10 phenotypes
- all people can be used in all analyses

Genetics, maternal weight, birthweight, leading to heart/diabetes risk in (adult) children

- Phase II is blood measurements on children, mothers, and the genetics
- Stratify on maternal weight and birthweight to undersample 'normal' families

Basic message

If you can't sample everyone, you can choose the most interesting people to sample **in any way you like** as long as everyone has a chance of being chosen.

You know the sampling probabilities for each person, they can be used in the analysis.

Using the whole cohort...

Available information

In a classical case-control study, only Y is known for the whole cohort.

Often we know more

- variables Z that are in our outcome model, maybe as confounders
- variables A that are not in our outcome model but are predictive either of X or of Y

We'd like to use this information

How to use the information

A general approach is to adjust the weights slightly, so that the estimated whole-cohort total for *auxiliary variables* like A and Z matches the known truth.

You get improved estimation for totals of anything correlated with A or Z .

In survey statistics this is called *calibration* or *raking*. In theoretical biostatistics these are *AIPW* estimators. Direct standardisation (in epidemiology) is a special case.

We want regression coefficients

Totals of variables Y or A or Z are not strongly correlated with regression coefficients

We need to use *influence functions* or *delta-betas* as the auxiliary variables for reweighting

To do this, we need to *impute* X for everyone in the cohort

Procedure

1. Impute X to get \hat{X} .
2. Fit your outcome model $Y \sim \hat{X} + Z$ using \hat{X} instead of X for **everyone**.
Call this the **whole-cohort model**
3. Extract the influence functions from the whole-cohort model and calibrate using them
4. Fit your outcome model $Y \sim X + Z$ to the calibrated phase-two subsample. Using `twophase()` **does** matter now.

[It's even better to use multiple imputation]

National Wilms' Tumour Group data

```
set.seed(2017-12-3)
```

```
nwts <- read.table("nwts-share.txt", header=TRUE)
```

```
names(nwts)
```

```
## [1] "trel" "tsur" "relaps" "dead" "study" "stage" "histol"
```

```
## [8] "instit" "age" "yr" "specwgt" "tumdiam"
```

New variables

A linear spline in age

```
nwts$age1 <- with(nwts, pmin(age, 1))  
nwts$age2 <- with(nwts, pmax(age, 1))
```

The full-cohort model

Histology:age interaction and stage:tumour-diameter interaction

```
fullmodel <- glm(relaps~histol*(age1+age2)+ I(stage>2)*tumdiam,
                family=binomial, data=nwts)
coef(summary(fullmodel))
```

##	Estimate	Std. Error	z value	Pr(> z)
## (Intercept)	-2.61048	0.34241	-7.6238	2.463e-14
## histol	5.66253	0.97790	5.7905	7.018e-09
## age1	-0.73020	0.34976	-2.0877	3.682e-02
## age2	0.12198	0.01920	6.3544	2.093e-10
## I(stage > 2)TRUE	1.50690	0.29682	5.0768	3.838e-07
## tumdiam	0.07219	0.01591	4.5386	5.663e-06
## histol:age1	-4.19225	1.05085	-3.9894	6.625e-05
## histol:age2	-0.03064	0.04752	-0.6448	5.191e-01
## I(stage > 2)TRUE:tumdiam	-0.08947	0.02355	-3.7984	1.456e-04

Case-control sample

Here we take all the cases and a random sample of controls

```
nwts$id <- 1:nrow(nwts)
cases <- subset(nwts, relaps==1)
noncases <- subset(nwts, relaps==0)
controlsample <- sample(noncases$id, nrow(cases))
ccsample<- rbind(cases, noncases[noncases$id %in% controlsample,])
ccsample$weight<-with(ccsample,
                      ifelse(relaps==1, 1, nrow(noncases)/nrow(cases)))
```

We can compare the maximum likelihood estimator and the survey estimator:

```
library(survey)
ccmle <- glm(relaps~offset(log(weight))+histol*(age1+age2)+
             I(stage>2)*tumdiam, family=binomial, data=ccsample)
coef(summary(ccmle))
```

##	Estimate	Std. Error	z value	Pr(> z)
## (Intercept)	-2.20612	0.42691	-5.1677	2.370e-07
## histol	5.13479	1.34403	3.8204	1.332e-04
## age1	-1.18201	0.44027	-2.6847	7.259e-03
## age2	0.20206	0.02855	7.0774	1.468e-12
## I(stage > 2)TRUE	2.41562	0.43219	5.5893	2.280e-08
## tumdiam	0.09628	0.02117	4.5477	5.423e-06
## histol:age1	-3.44287	1.47755	-2.3301	1.980e-02
## histol:age2	0.08089	0.09217	0.8777	3.801e-01
## I(stage > 2)TRUE:tumdiam	-0.13922	0.03429	-4.0601	4.906e-05


```

survey_cc <- svydesign(id=~1, weights=~weight, strata=~relaps,
                    data=ccsample)
ccest <- svyglm(relaps~histol*(age1+age2)+I(stage>2)*tumdiam,
              family=quasibinomial, design=survey_cc)
coef(summary(ccest))

```

##	Estimate	Std. Error	t value	Pr(> t)
## (Intercept)	-2.56853	0.40096	-6.406	2.070e-10
## histol	3.88912	1.21947	3.189	1.460e-03
## age1	-0.87602	0.39907	-2.195	2.832e-02
## age2	0.14053	0.02705	5.196	2.355e-07
## I(stage > 2)TRUE	1.86148	0.41186	4.520	6.743e-06
## tumdiam	0.07198	0.02152	3.345	8.444e-04
## histol:age1	-2.86948	1.33514	-2.149	3.180e-02
## histol:age2	0.10865	0.08409	1.292	1.965e-01
## I(stage > 2)TRUE:tumdiam	-0.10940	0.03318	-3.297	1.004e-03

The two seem fairly comparable: we know that asymptotically the maximum likelihood estimator must be better, but the difference is small enough to not show up in a single comparison

```
round(cbind(coef(ccmle), coef(ccest))-coef(fullmodel),3)
```

```
##           [,1]    [,2]
## (Intercept)  0.404  0.042
## histol      -0.528 -1.773
## age1        -0.452 -0.146
## age2         0.080  0.019
## I(stage > 2)TRUE  0.909  0.355
## tumdiam      0.024  0.000
## histol:age1   0.749  1.323
## histol:age2   0.112  0.139
## I(stage > 2)TRUE:tumdiam -0.050 -0.020
```

Using a `twophase()` object

The simple survey estimator does not use the full cohort; we can declare a `twophase` object that does. We do not need to specify weights because the software can work out what they are.

```
nwts_twophase <- twophase(id=list(~1,~1), strata=list(NULL, ~relaps),  
                        subset=~I((relaps==1) | id %in% controlsample),  
                        data=nwts)  
twophaseest <- svyglm(relaps~histol*(age1+age2)+ I(stage>2)*tumdiam,  
                    family=quasibinomial, design=nwts_twophase)
```

```
coef(summary(twophaseest))
```

```
##              Estimate Std. Error t value Pr(>|t|)
## (Intercept)  -2.56853    0.40318  -6.371 2.589e-10
## histol       3.88912    1.21920   3.190 1.456e-03
## age1        -0.87602    0.39888  -2.196 2.825e-02
## age2         0.14053    0.02704   5.198 2.331e-07
## I(stage > 2)TRUE  1.86148    0.41175   4.521 6.704e-06
## tumdiam      0.07198    0.02151   3.347 8.402e-04
## histol:age1  -2.86948    1.33484  -2.150 3.176e-02
## histol:age2   0.10865    0.08407   1.292 1.964e-01
## I(stage > 2)TRUE:tumdiam -0.10940    0.03317  -3.298 1.000e-03
```

We still aren't using the whole cohort for anything, so the two analyses are almost identical

Using the whole cohort

We'll try to use the whole cohort now. First, just use `instit` instead of `histol`

First, fit the model to the full data

```
phasesmodel <- glm(relaps~instit*(age1+age2)+ I(stage>2)*tumdiam,  
                  family=binomial, data=nwts)
```

Extract the influence functions and create a new design object

```
inffun<-model.matrix(phase1model)*resid(phase1model, type="response")
colnames(inffun)<-paste0("if",1:ncol(inffun))
aug_twophase <- twophase(id=list(~1,~1), strata=list(NULL, ~relaps),
                        subset=~I((relaps==1)| id %in% controlsample),
                        data=cbind(nwts,inffun), method="simple")
```

Calibrate, and fit the model of interest (ie, with `histol`) to the calibrated sample

```
calformula <- make.formula(colnames(inffun))
cal_twophase <- calibrate(aug_twophase, calformula, phase=2)
svyest_instit<-svyglm(relaps~histol*(age1+age2)+ I(stage>2)*tumdiam,
                      family=quasibinomial, design=cal_twophase)
```

```
coef(summary(svyest_instit))
```

##	Estimate	Std. Error	t value	Pr(> t)
## (Intercept)	-2.58154	0.33237	-7.7671	1.597e-14
## histol	6.47280	1.30594	4.9564	8.106e-07
## age1	-0.73222	0.32328	-2.2650	2.367e-02
## age2	0.11680	0.02021	5.7801	9.293e-09
## I(stage > 2)TRUE	1.59303	0.31440	5.0669	4.614e-07
## tumdiam	0.06967	0.01717	4.0575	5.249e-05
## histol:age1	-5.27895	1.42959	-3.6926	2.310e-04
## histol:age2	0.06956	0.07685	0.9051	3.656e-01
## I(stage > 2)TRUE:tumdiam	-0.09329	0.02521	-3.6999	2.245e-04

Comparing the uncalibrated and calibrated estimates, the coefficients have nearly all moved closer to the true full cohort value.

```
round(cbind(coef(twophaseest), coef(svyest_instit))-coef(fullmodel), 3)
```

```
##           [,1]  [,2]
## (Intercept)  0.042  0.029
## histol      -1.773  0.810
## age1        -0.146 -0.002
## age2         0.019 -0.005
## I(stage > 2)TRUE  0.355  0.086
## tumdiam      0.000 -0.003
## histol:age1   1.323 -1.087
## histol:age2   0.139  0.100
## I(stage > 2)TRUE:tumdiam -0.020 -0.004
```

Calibration by imputation

It is always valid to just use a surrogate such as `instit` in calibration, but it is probably not optimal.

The attenuation bias in using a mismeasured predictor translates into a loss of precision in the calibrated estimate. We can try to construct a regression imputation of histology instead:

```
impmodel<-svyglm(histol~instit*(relaps+I(stage>3))+I(age>10)+factor(study),
                 family=quasibinomial,design=nwts_twophase)
nwts$imphistol <-as.vector(predict(impmodel,newdata=nwts,
                                  type="response",se.fit=FALSE))
with(nwts, by(imphistol, histol, summary))
```

```
## histol: 0
```

```
##   Min. 1st Qu.  Median    Mean 3rd Qu.    Max.
## 0.0119 0.0191 0.0262 0.0419 0.0262 0.9873
```

```
## -----
```

```
## histol: 1
```

```
##   Min. 1st Qu.  Median    Mean 3rd Qu.    Max.
## 0.0140 0.0991 0.8789 0.6718 0.9810 0.9873
```

We now proceed as before. In particular, note that it is important to use `imphistol` for all observations in the phase-1 model, **even those where `histol` is available** – it was not available at phase 1.

```
phases1model_imp <- glm(relaps~imphistol*(age1+age2)+ I(stage>2)*tumdiam,  
                        family=binomial, data=nwts)
```

Extract the influence functions and create a new design object

```
inffun_imp<-model.matrix(phases1model_imp)*  
  resid(phases1model_imp, type="response")  
colnames(inffun_imp)<-paste0("if",1:ncol(inffun_imp))  
aug_twophase_imp <- twophase(id=list(~1,~1), strata=list(NULL, ~relaps),  
                             subset=~I((relaps==1)| id %in% controlsample),  
                             data=cbind(nwts,inffun_imp), method="simple")
```

Calibrate, and fit the model of interest

```
calformula <- make.formula(colnames(inffun_imp))
cal_twophase_imp <- calibrate(aug_twophase_imp, calformula, phase=2)
svyest_imp<-svyglm(relaps~histol*(age1+age2)+ I(stage>2)*tumdiam, family=quasibinomial, de
coef(summary(svyest_imp))
```

##	Estimate	Std. Error	t value	Pr(> t)
## (Intercept)	-2.61615	0.33200	-7.8800	6.773e-15
## histol	6.45150	1.39665	4.6193	4.225e-06
## age1	-0.74017	0.32235	-2.2961	2.182e-02
## age2	0.11742	0.02027	5.7913	8.707e-09
## I(stage > 2)TRUE	1.63215	0.31786	5.1348	3.245e-07
## tumdiam	0.07328	0.01729	4.2379	2.412e-05
## histol:age1	-5.01482	1.52036	-3.2984	9.980e-04
## histol:age2	-0.04630	0.07894	-0.5865	5.576e-01
## I(stage > 2)TRUE:tumdiam	-0.09501	0.02533	-3.7514	1.835e-04

There has been a slight additional improvement; slight, because `instit` is overwhelmingly the best predictor of histology.

```
round(cbind(coef(twophaseest), coef(svyest_instit),  
           coef(svyest_imp))-coef(fullmodel),3)
```

```
##           [,1]  [,2]  [,3]  
## (Intercept)  0.042  0.029 -0.006  
## histol      -1.773  0.810  0.789  
## age1        -0.146 -0.002 -0.010  
## age2         0.019 -0.005 -0.005  
## I(stage > 2)TRUE  0.355  0.086  0.125  
## tumdiam      0.000 -0.003  0.001  
## histol:age1   1.323 -1.087 -0.823  
## histol:age2   0.139  0.100 -0.016  
## I(stage > 2)TRUE:tumdiam -0.020 -0.004 -0.006
```